

# Goblin®



## Bagged cylinder vacuum cleaner



Please read and keep these instructions

### **Getting the best from your new cleaner...**

*If your cleaner is not picking up as well as it should, please check*

#### **Dustbags**

*Replace regularly to maintain the performance of the cleaner. Call our helpline for replacement dustbags.*

#### **Filters**

*When the bag is replaced, check the filters and clean if necessary.*

#### **Blockages**

*Check nozzles, tubes and hose and dust canister connector for blockages or partial blockages that may impair the performance of the cleaner.*



For replacement parts, help with using your Goblin product, problems and lots more, contact us by phone or through our website.

VC73276 MUK Rev 1



UK Helpline: 0844 871 0949  
Replacement Parts: 0844 873 0715  
Ireland Helpline: 1800 409 119

[www.goblin-vacuums.com](http://www.goblin-vacuums.com)

## **IMPORTANT SAFETY INSTRUCTIONS**

The use of any electrical appliance requires the following common sense safety rules.

Primarily there is danger of injury or death and secondly the danger of damage to the appliance.

Please read these instructions before using the cleaner.

### **Location**

- Do not use or keep this product outside.
- Do not store the appliance near hot surfaces eg. ovens or heating appliances.

### **Mains lead**

- Do not allow the mains lead to become strained or run this appliance over it.
- If the electrical cable becomes damaged, the cable assembly must be replaced. Do not attempt this task yourself, contact the helpline number that is found at the bottom of the page.

### **Personal safety**

- **WARNING: Keep loose clothing, hair, fingers etc. away from the turbo nozzle during use.**
- The plug must be removed from the wall socket before cleaning or maintaining the appliance.
- Never use in the presence of explosive liquid or vapours.

- Never pick up inflammable or poisonous liquids such as petrol, copier toner or other volatile substances. Never pick up acids, asbestos or asbestos dust.

- Never touch the plug or cable with wet hands.
- Unprofessional repairs can be dangerous for users.
- The appliance must never be left running unsupervised.
- This appliance is intended for domestic use only. Misuse or use for commercial or any other purpose will render the guarantee invalid.

- Always disconnect the appliance from the mains supply after use or prior to emptying, cleaning or maintaining.

- To protect against fire, electric shock and personal injury, do not immerse cord, plug or cleaner in water or other liquid.

- This appliance is not intended for use by persons (including children) with reduced physical, sensory or mental capabilities, or lack of experience and knowledge, unless they have been given supervision or instruction concerning the use of the appliance by a person responsible for their safety.

### **Product safety**

- Never use the appliance without the filters being installed.
- Never use the appliance to vacuum hot ashes, broken glass, sharp objects or liquids.

- Use only Goblin spare parts and accessories.
- Never modify the cleaner in any way.

### **Children**

- Children do not understand the dangers associated with operating electrical appliances. Never allow children to use this appliance.
- Children should be supervised to ensure that they do not play with the appliance, or stumble over the power cord.

### **ELECTRICAL REQUIREMENTS**

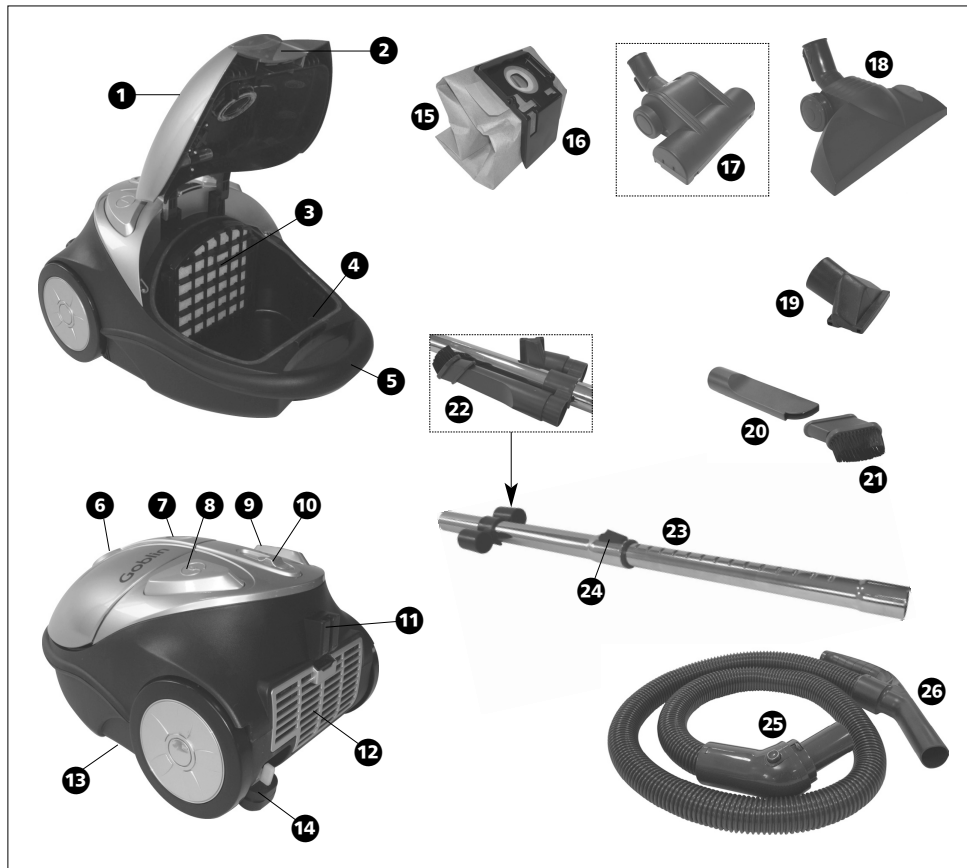
Check that the voltage on the rating plate of your appliance corresponds with your house electricity supply which must be A.C. (Alternating Current).

If the socket outlets in your home are not suitable for the plug supplied with this appliance, the plug should be removed and the appropriate one fitted.

If you cut off the plug and let go of the cable, it will rewind into the machine, therefore you must pull out a length of cable and secure it before cutting the plug off and re-fitting a new one.

**WARNING: The plug removed from the mains lead, if severed, must be destroyed, as a plug with a bared flexible cord is hazardous if engaged into a live socket outlet.**

Should the fuse in the 13 amp plug require changing, a 13 amp BS1362 fuse must be fitted.



## FEATURES

- |   |  |  |
|---|--|--|
| 1 Dust compartment cover  | 9 On/off switch                          | 18 Combination floor nozzle                  |
| 2 Dust compartment release lever (Note: If a dustbag is not fitted, the cover will not close) | 10 Eco Switch                            | 19 Upholstery nozzle                         |
| 3 Motor protection filter   | 11 Tube standby slot                     | 20 Crevice tool                              |
| 4 Slot for attaching dustbag holder   | 12 Exhaust filter                        | 21 Brush attachment                          |
| 5 Carrying handle   | 13 Tube park (on the base)               | 22 Clip-on tool holder                       |
| 6 Hose inlet  | 14 Power cable and plug, in storage area | 23 Telescopic metal tube                     |
| 7 Dustbag full indicator  | 15 Paper dustbag                         | 24 Telescopic tube release button            |
| 8 Cable rewind switch   | 16 Dustbag holder                        | 25 Suction hose                              |
|   | 17 Turbo brush (certain models only)     | 26 Suction hose handle with air flow control |

## OPERATING THE APPLIANCE OPERATION

### Suction hose

Push the 360° rotating head on the suction hose **25** into the suction hose inlet **6** on the vacuum cleaner.

To remove, press the buttons on the hose and pull out.

The appropriate cleaning tool can be attached directly to the other end of the suction hose or the telescopic metal tube can be used between the suction hose and the tool.

## TOOLS AND ACCESSORIES

### Telescopic tube

Attach the telescopic tube **23** to the handle end **25** of the hose **25**. Extend to the required length by pressing down the slider release **24** and pulling out the tube **23**. Attach the required accessory to end of the tube.

### Combination floor nozzle **18**

This nozzle is suitable for general purpose cleaning on a wide variety of floor coverings.

### Turbo brush **17** (certain models only)

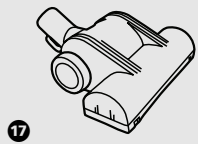
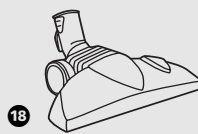
This nozzle is suitable for cleaning and rejuvenating cut pile carpets and is ideal for picking up stubborn dirt and pet and human hairs.

### Cleaning the turbo nozzle

The turbo nozzle should be regularly cleaned and any hairs or fibres wrapped around the brush bar removed to maintain optimum performance.

A cover on the base allows access to the turbine in case any large particles become trapped.

### Standard accessories



### Application



Curtains and delicate fabrics



Textiles and upholstery

Shelves and hard surfaces



Carpets and other textile floor coverings (brushes up)



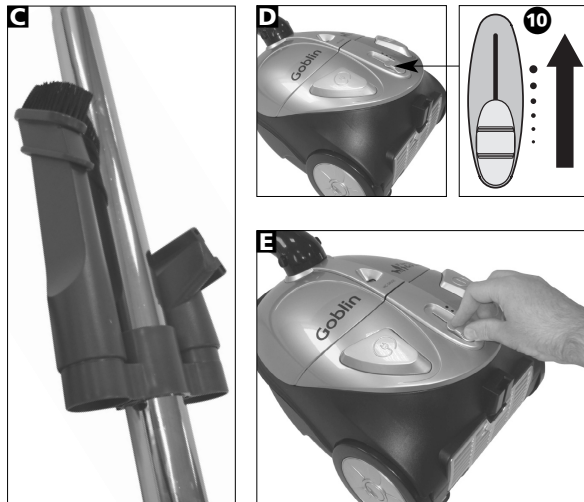
Settings for heavy dirt and smooth floors (brushes down)

Ideal for pet and human hair removal

### Other accessories include:

- **Upholstery nozzle **19**** for sofas, armchairs etc.
- **Crevice tool **20**** for awkward places, corners and behind radiators etc.
- **Brush attachment **21**** for pelmets, delicate objects etc.





### Tool storage

The upholstery nozzle and the crevice tool and brush attachment may be stored on the tube using the clip holder .

### Switching on

Always pull out the supply cable to its maximum length. Plug the appliance into the mains supply.

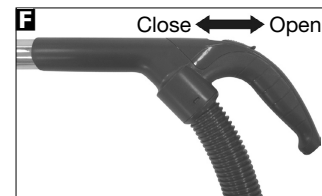
Ensure that the Eco Switch is set to the required setting before switching the cleaner on . Push the on/off switch to start the motor.

### Controlling suction power

The suction power can be varied to suit the surface being cleaned, by using the Eco Switch , see table for guideline settings.

The suction power can also be adjusted using the fingertip control on the handle .

**Closed:** full suction  
**Open:** reduced suction



Eco Switch Power setting	Application
	Curtains and delicate fabrics
	Textiles and upholstery
	Floor coverings, such as rugs, economy setting for carpets
	Carpets or hard floor coverings

### Recommended settings

Alter the power setting to suit the surface (as shown in the table, left).

### Dustbag full indicator

If the indicator is permanently fully red, the bag is full. If the bag does not appear full, check for blockages and clean the filters.

Please note: the indicator will occasionally go red during use, this is normal.



### Tube standby

During short breaks in cleaning, the tubes can be held in an upright, 'standby' position , whilst you move furniture for instance.



### Switching off

IMPORTANT: Ensure that the appliance is never left unattended whilst it is switched on.



Switch off the appliance. Remove the plug from the mains supply and rewind the power cable using the cable rewind switch .

**WARNING: When using the cable rewind, always hold the plug as the cable will rewind quickly.**

## STORAGE



### Tube park

The vacuum cleaner can be stored in an upright position. Rotate the floor nozzle until the lug on the neck can be fitted into the tube park slot on the base of the appliance.

## MAINTENANCE

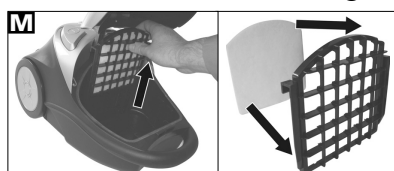
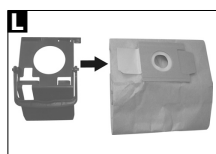


## DUSTBAG

### Changing the dustbag

If suction power is reduced or if the 'dustbag full' indicator is permanently fully red, the dustbag needs changing. Also, check whether the suction hose, tube or nozzle are blocked.

To access the dustbag, press the dust compartment release lever to open the cover .



- 1 Pull the tab on the dustbag to one side so that the opening is hygienically sealed.
- 2 Pull out the dustbag holder and dustbag in an upward direction .
- 3 Pull the bag sideways out of the holder .
- 4 Dispose of the bag with your household waste.
- 5 Insert a new dustbag in the holder.
- 6 Replace the dustbag holder and close the cover.

IMPORTANT: If a dustbag is not fitted, the cover will not close. This is a safety feature.

## FILTERS

### Changing/cleaning the motor protection filter

The motor protection filter is accessible from the dust compartment only when the dustbag has been removed first.

IMPORTANT: Never use the appliance without the motor protection filter installed, otherwise damage to the motor may occur which would not be covered by the guarantee.

- 1 Slide the filter cover upwards to remove .
- 2 Take out the filter and clean (by shaking) or wash .
- 3 To wash the filter, gently wash in warm water and leave to air dry. Do not use detergents. Ensure the filter is fully dry before replacing into the machine.
- 4 Slide the filter holder back into position.

IMPORTANT: Check this filter every time the dustbag is replaced and clean if necessary.

### ■ **Changing/cleaning the exhaust air filter**

The exhaust air filter ⑫ should be cleaned by shaking every time the dustbag is changed ⑮.

Release the grill cover by pressing down on the push button, below the tube standby slot ①. Remove the filter cover by pulling the tab. Take out the filter and clean. To wash the filter, gently wash in warm water and leave to air dry. Do not use detergents. Ensure the filter is fully dry before replacing into the machine.

### ■ **HINTS AND TIPS**

#### ■ **Cleaning and maintenance**

Unplug from the mains supply before cleaning. The vacuum cleaner, especially the dust compartment and all accessories, can be cleaned using a damp cloth or a non-abrasive domestic cleaner and wiped dry.

To keep the underside of the floor nozzle clean, vacuum it at regular intervals using the crevice tool.

### ■ **Purchasing dustbags and filters**

Use only genuine replacement dustbags and filters which can be purchased from specialist retailers or by calling our helpline number.

### ■ **HELPLINE**

If you have any difficulty with your appliance, do not hesitate to call us.

We are more likely to be able to help than the store from where you bought it.

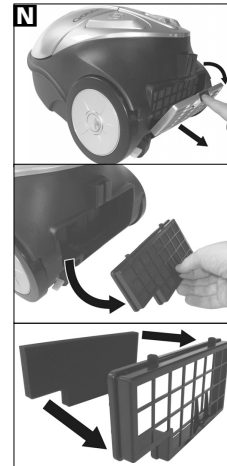
Please have the following information ready to enable our staff to deal with your query quickly.

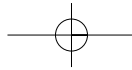
- Name of the product
- Model number as shown on the underside of the appliance.
- Serial number as shown on underside of the appliance.

**UK Helpline 0844 871 0949**

**Replacement Parts 0844 873 0715**

**Ireland Helpline 1800 409 119**





## YOUR TWO YEAR GUARANTEE

It is important to retain the retailer's receipt as proof of purchase. Staple your receipt to this back cover for future reference.

Please quote the following information if the product develops a fault. These numbers can be found on the base of the product.

### Model no.

### Serial no.

All Goblin products are individually tested before leaving the factory. In the unlikely event of any appliance proving to be faulty within 28 days of purchase, it should be returned to the place of purchase for it to be replaced.

If the fault develops after 28 days and within 24 months of original purchase, you should contact the Helpline number quoting Model number and Serial number on the product, or write to Goblin at the address shown.

You may be asked to return a copy of proof of purchase.

Subject to the exclusions set out below (see Exclusions), the faulty appliance will then be repaired or replaced and dispatched usually within 7 working days of receipt.

If you suspect a fault, follow the simple checks detailed below before retrying the appliance or calling the helpline.

Goblin products are intended for household use only.

Goblin has a policy of continuous improvement in product quality and design. The company, therefore reserves the right to change the specification of it's models at any time.

- Check the filters for blockages.
- Check the tools / tubes for blockages.
- Check the plug is firmly in the socket.
- Check the socket is working by trying another appliance.
- Check the fuse in the plug.

If, for any reason, this item is replaced during the 2 year guarantee period, the guarantee on the new item will be calculated from original purchase date. Therefore, it is vital to retain your original till receipt or invoice to indicate the date of initial purchase.

To qualify for the 2 year guarantee, the appliance must have been used according to the instructions supplied.

**4** The appliance has been used for hire purposes or non domestic use.

**5** The appliance is second hand.

**6** Goblin are not liable to carry out any type of servicing work, under the guarantee.

**7** The guarantee excludes consumables such as bags and filters.

- This guarantee does not confer any rights other than those expressly set out above and does not cover any claims for consequential loss or damage. This guarantee is offered as an additional benefit and does not affect your statutory rights as a consumer.

- This guarantee is valid in the UK and Ireland only.

## EXCLUSIONS

Goblin shall not be liable to replace or repair the goods under the terms of the guarantee where:

- 1** The fault has been caused or is attributable to accidental use, misuse, negligent use or used contrary to the manufacturer's recommendations or where the fault has been caused by power surges or damage caused in transit.
- 2** The appliance has been used on a voltage supply other than that stamped on the products.
- 3** Repairs have been attempted by persons other than our service staff (or authorised dealer).



For electrical products sold within the European Community. At the end of the electrical products useful life, it should not be disposed of with household waste.

Please recycle where facilities exist. Check with your Local Authority or retailer for recycling advice in your country.

## Goblin®

Goblin is a registered trade mark of Morphy Richards Ltd.

### morphy richards®

**The After Sales Division  
Morphy Richards Ltd**  
Mexborough, South Yorkshire,  
England, S64 8AJ

Helplines (office hours)  
UK 0844 871 0949  
Spare Parts 0844 873 0715  
Republic of Ireland 1800 409 119

VC73276 MUK Rev 1 09/08

For details of other products in the Goblin range, please see our website . . .

